

9530 Torque wrench set for heat pumps/air conditioning, 4 pieces

Click-Torque adjustable torque wrenches for insert tools



EAN:	4013288228987	Size:	435x115x110 mm
Part number:	05136076001	Weight:	2550 g
Article number:	9530	Country of origin:	TW
		Customs tariff number:	82079030

- Set for the proper tightening of screw connections when installing and repairing refrigeration and air conditioning systems as well as heat pumps
- Click-Torque X 7 torque wrench with mounting for exchangeable insert tools 14x18 mm
- Measuring range: 10-100 Nm; precision $\pm 4\%$ as per DIN EN ISO 6789-1:2017-07
- The laser-engraved, abrasion-proof QR code makes it easier to determine the correct torque value depending on the torque wrench and insert tool used
- Easy setting and saving of the desired torque value with audible and tactile clicks when reaching the scale values
- Audible and tactile release mechanism when the set torque value is reached
- The adjustable 7880 Joker covers all metric and imperial dimensions in the respective field of application
- Automatic and continuous gripping of the hexagon screw or bolt

4-piece Click-Torque torque wrench set with three self-setting exchangeable Joker insert spanners. For the proper tightening of screw connections when installing and repairing refrigeration and air conditioning systems as well as heat pumps. Click torque wrench in the distinctive Wera design. Very robust design with high accuracy as per DIN EN ISO 6789-1:2017-07. Easy setting and saving of the default value. The audible and tactile clicks on reaching the scale values facilitate the safe setting of the desired torque value. The robust release mechanism guarantees a clearly audible and tactile release signal when the set torque value is reached. For clockwise and anti-clockwise torque-control and with 14x18 mm square head insert for mounting corresponding insert tools. With its continuous and parallel jaws, the three self-setting Joker 7880 insert spanners replace several single spanner sizes. The required size is automatically and continuously set when attaching the tool to the hexagon bolt or screw. The ratchet feature ensures fast and consistent screwdriving without removing the tool. By using the corner-width rectangular prisms, a return angle of only 30° can be achieved.

Web link

https://products.wera.de/en/torque_tools_series_click-torque_wrenches_click-torque_adjustable_torque_wrenches_for_insert_tools_9530.html

Wera - 9530
05136076001 - 4013288228987

Wera Werkzeuge GmbH
Korzter Straße 21-25
D-42349 Wuppertal
Tel: +49 (0)2 02 / 40 45-0
E-Mail: info@wera.de

9530 Torque wrench set for heat pumps/air conditioning, 4 pieces



Click-Torque adjustable torque wrenches for insert tools

For air conditioning lines

Click-Torque X 7 torque wrench

Exact

Simple and safe



No image available



No image available



Precise to $\pm 4\%$ as per DIN EN ISO 6789-1:2017-07.



Easy setting and saving of the desired torque value; readable on the main and fine scales.

With the 9530 set, the screw connections used for refrigeration and air conditioning systems as well as heat pump lines can be properly tightened.

Measuring range 10-100Nm; with mounting for exchangeable insert tools 14x18 mm.

Simple setting

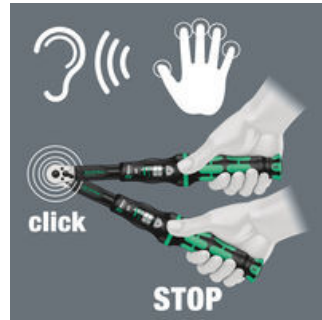
Release mechanism

For right and left direction

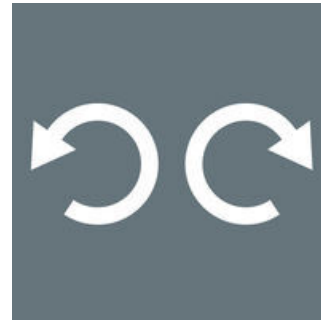
Drive 14x18 mm



With audible and tactile clicks when adjusting the scale values.



When the set torque value is reached, an audible and tactile mechanism triggers.



The Click-Torque wrenches for insert tools are suitable for clockwise and counterclockwise uses.



For torque wrenches of the Click-Torque X series with 14x18 mm holder.

Web link

https://products.wera.de/en/torque_tools_series_click-torque_wrenches_click-torque_adjustable_torque_wrenches_for_insert_tools_9530.html

Wera - 9530

05136076001 - 4013288228987

Wera Werkzeuge GmbH

Korzter Straße 21-25

D-42349 Wuppertal

Tel: +49 (0)2 02 / 40 45-0

E-Mail: info@wera.de

9530 Torque wrench set for heat pumps/air conditioning, 4 pieces

Click-Torque adjustable torque wrenches for insert tools



Set contents:

Click-Torque X 7 torque wrench for insert tools, 10-100 Nm, 14x18 x 10-100 Nm



05075657001¹⁾ 1x 14x18 x 10-100 Nm

1) S_k = Actual dimension of the test attachment; l_k = Distance from the force application point to the test device axis

7880 Joker XXL Self-setting insert spanner for wrench sizes 24-32 mm, 14x18mm, 14x18 x 24-32 x 15/16-1 1/4" x 113.5 mm



05020173001 1x 14x18 x 24-32 x 15/16-1 1/4" x 113.5 mm

7880 Joker XL Self-setting insert spanner for wrench sizes 19-24 mm, 14x18mm, 14x18 x 19-24 x 3/4-15/16" x 95 mm



05020172001 1x 14x18 x 19-24 x 3/4-15/16" x 95 mm

7880 Joker L Self-setting insert spanner for wrench sizes 16-19 mm, 14x18mm, 14x18 x 16-19 x 5/8-3/4" x 85.5 mm



05020171001 1x 14x18 x 16-19 x 5/8-3/4" x 85.5 mm

Web link

https://products.wera.de/en/torque_tools_series_click-torque_wrenches_click-torque_adjustable_torque_wrenches_for_insert_tools_9530.html

Wera - 9530
05136076001 - 4013288228987

Wera Werkzeuge GmbH
Korzter Straße 21-25
D-42349 Wuppertal
Tel: +49 (0)2 02 / 40 45-0
E-Mail: info@wera.de