

9608 Magnetic rail B Impaktor Imperial 1, 9 pieces

Zyklop Accessories, 3/8"



EAN:	4013288227553	Size:	340x85x35 mm
Part number:	05005452001	Weight:	700 g
Article number:	9608	Country of origin:	TW
		Customs tariff number:	82042000

- 9-piece socket set on socket rail, 3/8"
- Rail with secure socket mounting and yet easy removal (twist-to-unlock) for temporary attachment on wall, shelf or workshop trolley
- Smooth Twist to Unlock mechanism for a secure fit and simple removal of the sockets
- For use with electric or pneumatic wrenches with 3/8" drive
- Impaktor technology for above-average service life
- Hexagonal profile enables precise and profile-preserving screwdriving with high power transmission
- With cross-bore and ring socket for securing locking pin and locking ring of machine-operated tools

Socket rail with 9 Impaktor socket wrenches for use with electric or pneumatic wrenches with 3/8" drive. The Impaktor technology ensures a higher-than-average service life even at extreme requirements. The hexagon profile used allows a high power transmission while simultaneously being precise and protecting the profile. With "Take it easy" Tool finder with colour coding by size - for quick and easy identification of the required tool. The rail allows temporary attachment to metallic surfaces and, with its twist-to-unlock function, ensures secure locking and unlocking of the sockets.

Web link

https://products.wera.de/en/ratchets_and_accessories_the_zyklop_ratchets_the_zyklop_ratchets_3_8_zyklop_accessories_3_8_9608.html

Wera - 9608
05005452001 - 4013288227553

Wera Werkzeuge GmbH
Korzter Straße 21-25
D-42349 Wuppertal
Tel: +49 (0)2 02 / 40 45-0
E-Mail: info@wera.de

9608 Magnetic rail B Impaktor Imperial 1, 9 pieces

Zyklop Accessories, 3/8"

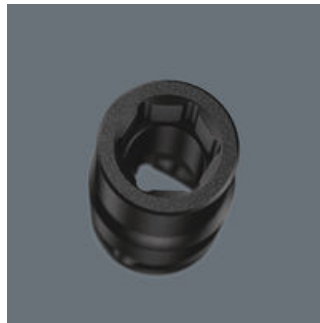


For electric or pneumatic impact wrenches



The Impaktor technology ensures above-average service life of the Impaktor socket wrench plug-ins even under extreme conditions.

Profile-friendly power transmission



The hexagon profile allows the transmission of high forces and puts less strain on the edges of bolts or screw heads than a double hexagon profile. Fine-toothed ratchets also make the use of a double hexagon profile superfluous, even in confined spaces, thanks to their small return angle.

Cross-bore and ring socket



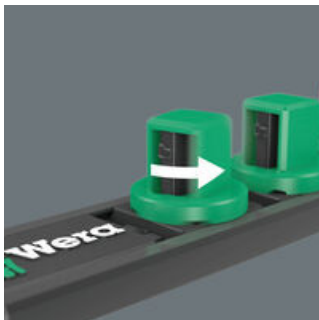
Due to the groove and the ring socket, the tool can be secured with a locking pin or O-ring on the power tool.

Take it easy tool finder system



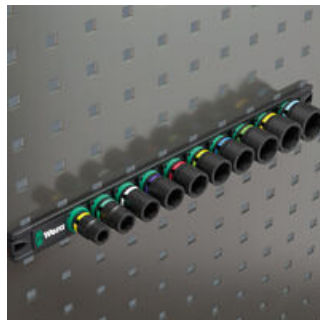
Take it easy tool finder system - with profile and size colour-coding for quick and easy tool selection. Colour-coded system for hexagon drive screws (L-Keys, Zyklop bit sockets), external hex drive screws and nuts (Joker wrenches, Zyklop sockets and Zyklop bit sockets with holding function), and TORX® drive screws (L-Keys, Zyklop bit sockets).

Twist-to-unlock mechanism



With its twist-to-unlock mechanism the socket rail ensures easy access of the sockets. At the same time the sockets are held securely.

Magnetic



Thanks to the magnet, the rail is suitable for temporary attachment to the wall, shelf or workshop trolley.

Web link

https://products.wera.de/en/ratchets_and_accessories_the_zyklop_ratchets_the_zyklop_ratchets_3_8_zyklop_accessories_3_8_9608.html

Wera - 9608
05005452001 - 4013288227553

Wera Werkzeuge GmbH
Korzter Straße 21-25
D-42349 Wuppertal
Tel: +49 (0)2 02 / 40 45-0
E-Mail: info@wera.de

9608 Magnetic rail B Impaktor Imperial 1, 9 pieces

Zyklop Accessories, 3/8"



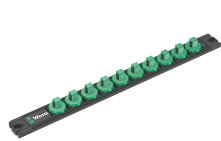
Set contents:

8790 B Impaktor socket with 3/8" drive, 1/4" x 30 mm



05005514001	1x	1/4" x 30 mm
05005515001	1x	5/16" x 30 mm
05005516001	1x	3/8" x 30 mm
05005517001	1x	7/16" x 30 mm
05005518001	1x	1/2" x 30 mm
05005519001	1x	9/16" x 30 mm
05005520001	1x	5/8" x 30 mm
05005521001	1x	11/16" x 30 mm
05005522001	1x	3/4" x 30 mm

9601 Magnetic socket rail, 3/8", empty, 30 x 340 mm



05136421001	1x	30 x 340 mm
-------------	----	-------------

Web link

https://products.wera.de/en/ratchets_and_accessories_the_zyklop_ratchets_the_zyklop_ratchets_3_8_zyklop_accessories_3_8_9608.html

Wera - 9608
05005452001 - 4013288227553

Wera Werkzeuge GmbH
Korzter Straße 21-25
D-42349 Wuppertal
Tel: +49 (0)2 02 / 40 45-0
E-Mail: info@wera.de