

9607 Magnetic rail B Impaktor 1, 10 pieces

Zyklop Accessories, 3/8"



EAN:	4013288227546	Size:	377x80x37 mm
Part number:	05005451001	Weight:	990 g
Article number:	9607	Country of origin:	TW
		Customs tariff number:	82042000

- 10-piece socket set on socket rail, 3/8"
- Rail with secure socket mounting and yet easy removal (twist-to-unlock) for temporary attachment on wall, shelf or workshop trolley
- Smooth Twist to Unlock mechanism for a secure fit and simple removal of the sockets
- For use with electric or pneumatic wrenches with 3/8" drive
- Impaktor technology for above-average service life
- Hexagonal profile enables precise and profile-preserving screwdriving with high power transmission
- With cross-bore and ring socket for securing locking pin and locking ring of machine-operated tools

Socket rail with 10 Impaktor socket wrenches for use with electric or pneumatic wrenches with 3/8" drive. The Impaktor technology ensures a higher-than-average service life even at extreme requirements. The hexagon profile used allows a high power transmission while simultaneously being precise and protecting the profile. With "Take it easy" Tool finder with colour coding by size - for quick and easy identification of the required tool. The rail allows temporary attachment to metallic surfaces and, with its twist-to-unlock function, ensures secure locking and unlocking of the sockets.

Web link

https://products.wera.de/en/ratchets_and_accessories_the_zyklop_ratchets_the_zyklop_ratchets_3_8_zyklop_accessories_3_8_9607.html

Wera - 9607
05005451001 - 4013288227546

Wera Werkzeuge GmbH
Korzter Straße 21-25
D-42349 Wuppertal
Tel: +49 (0)2 02 / 40 45-0
E-Mail: info@wera.de

9607 Magnetic rail B Impaktor 1, 10 pieces

Zyklop Accessories, 3/8"

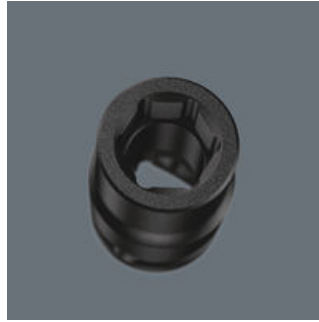


For electric or pneumatic impact wrenches



The Impaktor technology ensures above-average service life of the Impaktor socket wrench plug-ins even under extreme conditions.

Profile-friendly power transmission



The hexagon profile allows the transmission of high forces and puts less strain on the edges of bolts or screw heads than a double hexagon profile. Fine-toothed ratchets also make the use of a double hexagon profile superfluous, even in confined spaces, thanks to their small return angle.

Cross-bore and ring socket



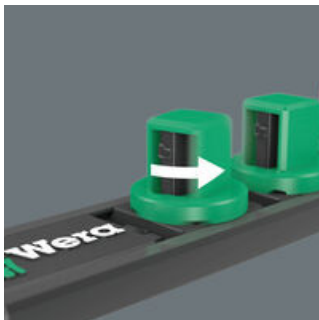
Due to the groove and the ring socket, the tool can be secured with a locking pin or O-ring on the power tool.

Take it easy tool finder system



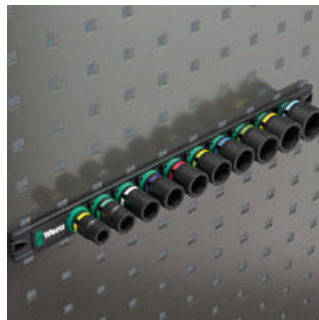
Take it easy tool finder system - with profile and size colour-coding for quick and easy tool selection. Colour-coded system for hexagon drive screws (L-Keys, Zyklop bit sockets), external hex drive screws and nuts (Joker wrenches, Zyklop sockets and Zyklop bit sockets with holding function), and TORX® drive screws (L-Keys, Zyklop bit sockets).

Twist-to-unlock mechanism



With its twist-to-unlock mechanism the socket rail ensures easy access of the sockets. At the same time the sockets are held securely.

Magnetic



Thanks to the magnet, the rail is suitable for temporary attachment to the wall, shelf or workshop trolley.

Web link

https://products.wera.de/en/ratchets_and_accessories_the_zyklop_ratchets_the_zyklop_ratchets_3_8_zyklop_accessories_3_8_9607.html

Wera - 9607
05005451001 - 4013288227546

Wera Werkzeuge GmbH
Korzter Straße 21-25
D-42349 Wuppertal
Tel: +49 (0)2 02 / 40 45-0
E-Mail: info@wera.de

9607 Magnetic rail B Impaktor 1, 10 pieces

Zyklop Accessories, 3/8"



Set contents:

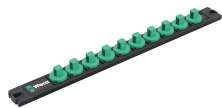
8790 B Impaktor socket with 3/8" drive, 10 x 30 mm



05005501001	1x	10 x 30 mm
05005504001	1x	13 x 30 mm
05005506001	1x	15 x 30 mm
05005507001	1x	16 x 30 mm
05005508001	1x	17 x 30 mm
05005509001	1x	18 x 30 mm
05005510001	1x	19 x 30 mm
05005511001	1x	21 x 32 mm
05005512001	1x	22 x 32 mm
05005513001	1x	24 x 32 mm

9603 Impaktor socket rail, 1/2", empty, 30 x 340 mm

1x 30 x 340 mm



Web link

https://products.wera.de/en/ratchets_and_accessories_the_zyklop_ratchets_the_zyklop_ratchets_3_8_zyklop_accessories_3_8_9607.html

Wera - 9607

05005451001 - 4013288227546

Wera Werkzeuge GmbH

Korzter Straße 21-25

D-42349 Wuppertal

Tel: +49 (0)2 02 / 40 45-0

E-Mail: info@wera.de